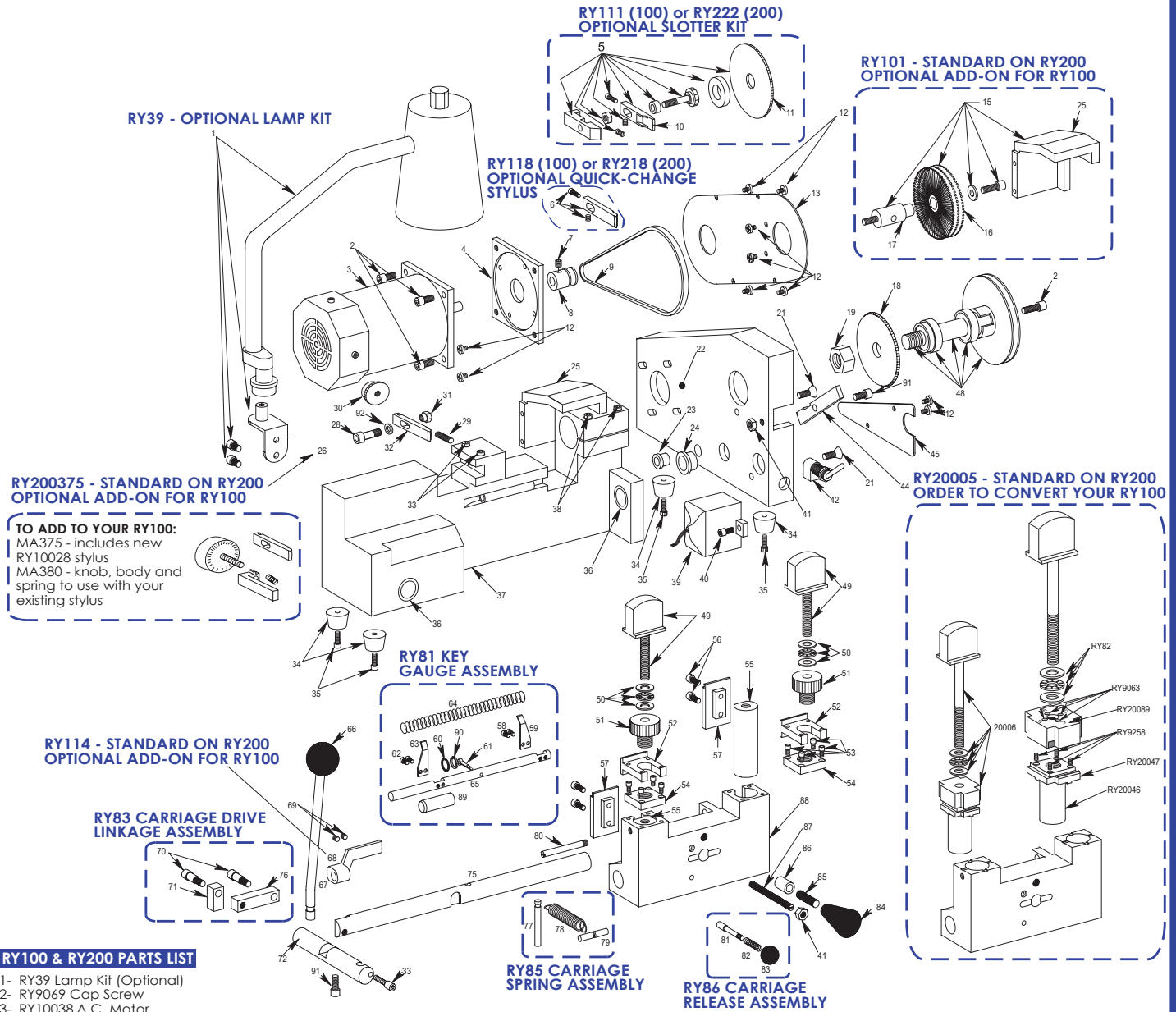


EXPLODED VIEW - RY100/200 *Rydan* INCORPORATED



RY100 & RY200 PARTS LIST

- 1- RY39 Lamp Kit (Optional)
- 2- RY9069 Cap Screw
- 3- RY10038 A.C. Motor
- 4- RY10033 Motor Mounting Plate
- 5- RY111 Slotter Kit for RY100 (Optional)
- 6- RY222 Slotter Kit for RY200 (Optional)
- 7- RY118 QC Stylus for RY100 (Optional)
- 8- RY218 QC Stylus for RY200 (Optional)
- 9- RY9048 Set Screw
- 10- RY10037 Motor Pulley
- 11- RY9039 Drive Belt
- 12- RY1118
- 13- RY218 Slotter Stylus (optional)
- 14- RY115 Stylus Cutter (optional)
- 15- RY9046 Phillips Screw
- 16- RY10016 Belt Guard
- 17- RY101 Wire Brush Kit (optional)
- 18- RY9074 Replacement Wire Brush
- 19- RY10101 Arbor
- 20- RY10030 Cutter for RY100
- 21- RY20030 Cutter for RY200
- 22- RY10036 Cutter Hex Nut (Left Hand)
- 23- RY9054 Flat Head Screw
- 24- RY10012 Motor Bracket
- 25- RY9053 Strain Relief
- 26- RY9052 Bushing
- 27- RY10013 Guard
- 28- RY200375 Adjustable Stylus (optional)
- 29- RY9042 Cap Screw
- 30- RY9029 Set Screw
- 31- RY10029 Stylus Adjustment Knob
- 32- RY9056 Nylon Lock Nut
- 33- RY10028 Stylus for RY100
- 34- RY20028 Stylus for RY200

- 35- RY9057 Cap Screw
- 36- RY9145 Rubber Foot
- 37- RY9058 Cap Screw
- 38- RY9024 Bronze Oilite™ Bearing
- 39- RY10010 Machine Base
- 40- RY9044 Cap Screw
- 41- RY10039 Capacitor Assembly
- 42- RY9065 Cap Screw
- 43- RY9055 Hex Jam Nut
- 44- RY9041 Switch
- 45- RY10035 Cutter Shaft Lock
- 46- RY10017 Access Plate
- 47- RY84 Ball Bearing Spindle Assembly
- 48- RY80 Key Vise Knob & Stud
- 49- RY82 3-Piece Thrust Bearing Assy.
- 50- RY10041 Top Jaw Clamp Knob
- 51- RY89 Top Jaw for RY100
- 52- RY20089 Top Jaw for RY200
- 53- RY9063 Cap Screw
- 54- RY10045 Top Plate
- 55- RY10046 Vise Plunger for RY100
- 56- RY20046 Vise Plunger for RY200
- 57- RY9062 Cap Screw
- 58- RY10047 Bottom Jaw for RY100
- 59- RY9107 Slot Head Screw
- 60- RY10048 Key Gauge R.H.
- 61- RY9108 O-Ring
- 62- RY9279 Cotter Pin
- 63- RY9061 Cap Screw
- 64- RY10050 Key Gauge L.H.

- 65- RY10049 Key Gauge Shaft
- 66- RY9027 Lever Knob
- 67- RY10018 Lever Shaft
- 68- RY114 Key Gauge Protector (RY200)
- 69- RY9003 Set Screw
- 70- RY9059 Shoulder Screw
- 71- RY10020 Drive Link
- 72- RY10019 Drive Shaft
- 73- RY10022 Carriage Shaft
- 74- RY10021 Shaft Link
- 75- RY10026 Carriage Shaft Spring Pin
- 76- RY10025 Carriage Extension Spring
- 77- RY9200 Retaining Pin
- 78- RY10056 Key Ring Stud
- 79- RY10023 Carriage Release Stud
- 80- RY9025 Carriage Release Spring
- 81- RY9038 Carriage Release Knob
- 82- RY9028 Carriage Knob
- 83- RY10086 Threaded Stud
- 84- RY10060 Knob Spacer
- 85- RY10087 Carriage Over-Travel
- 86- RY10011 Carriage for RY100
- 87- RY20011 Carriage for RY200
- 88- RY9278 Vinyl Cap
- 89- RY10067 Flat Washer
- 90- RY9047 Cap Screw
- 91- RY9273 Plastic Small Washer

PARTS NOT ILLUSTRATED

- RY9040 Power Cord
- RY9051 Wire Nut
- RY88 12 Volt D.C. Motor
- RY99 12 Volt Wiring Kit

CONVERT YOUR MACHINE & EQUIP IT WITH 4-WAY JAWS!

Order Part # RY20005
COMPLETE carriage assembly with 4-way jaws. Can be swapped out with carriage on your RY100 or RY256

*Part Drawing may be different than actual part. Rydan reserves the right to make changes